

CONCEPT PLAN
1:100 @ A3

a house without corners
NEW PROJECT B: AVID's Detached Lowset in Hervey Bay (QLD)

Jane & Emily Arnold's Entry
PRELIMINARY CONCEPT ONLY



EAST (STREET) ELEVATION
1:100 @ A3



WEST (STREET) ELEVATION
1:100 @ A3



SOUTH ELEVATION
1:100 @ A3



NORTH ELEVATION
1:100 @ A3

a house without corners

NEW PROJECT B: AVID's Detached Lowset in Hervey Bay (QLD)

Jane & Emily Arnold's Entry
PRELIMINARY CONCEPT ONLY



CONCEPT SECTIONAL PERSPECTIVE
TYPICAL DAY
 NTS

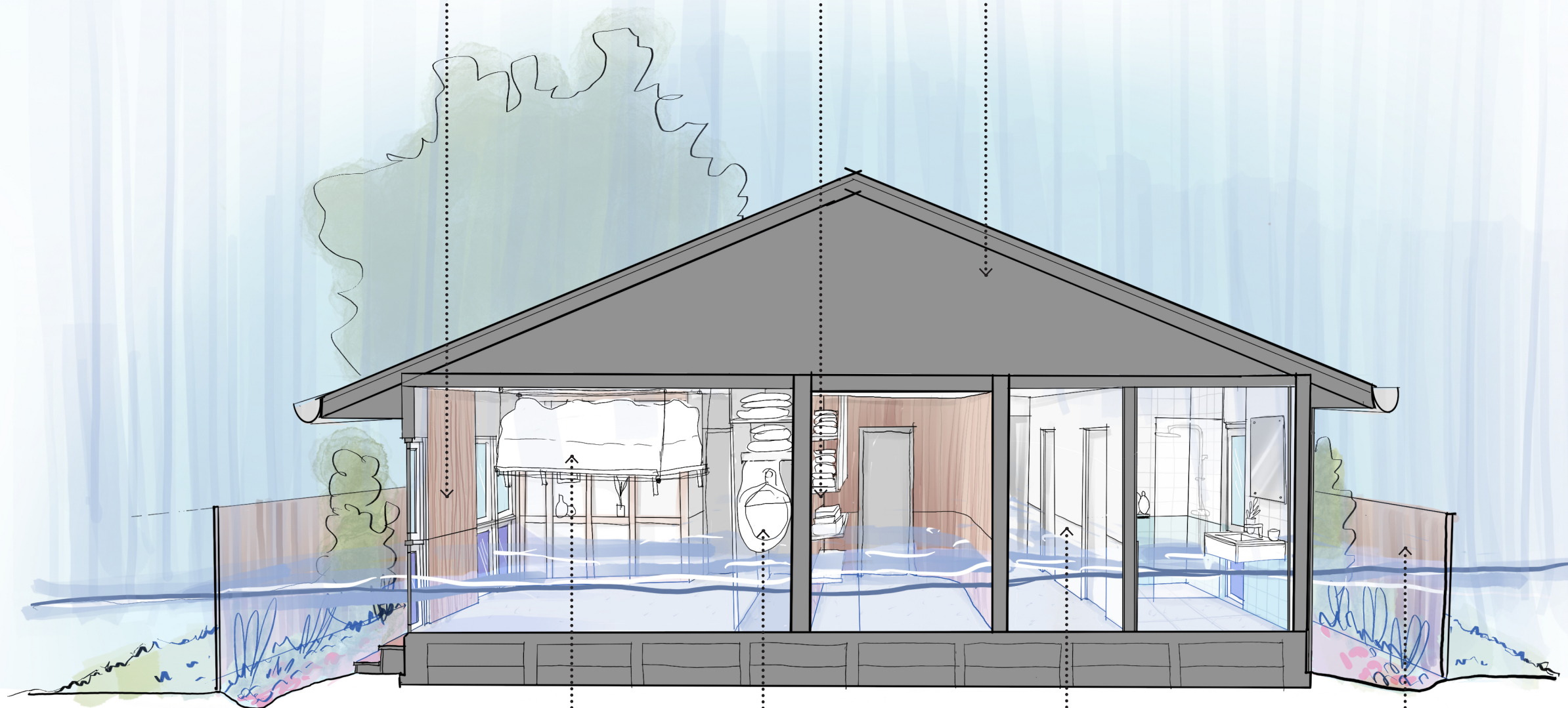
a house without corners
 NEW PROJECT B: AVID's Detached Lowset in Hervey Bay (QLD)

Jane & Emily Arnold's Entry
 PRELIMINARY CONCEPT ONLY

NLT & HARDWOOD FRAMING MAY HAVE A COATING TO PROTECT FROM WATER (SUBJECT TO R&D, COULD BE HIGH GLOSS PAINT)

IN GENERAL: LESS CABINETRY & BELOW THE FLOODLINE. LARGE SHELVES WHERE BOXES CAN BE KEPT

POTENTIAL TO CREATE A LOFT STORAGE SPACE WHICH CAN BE ACCESSED FROM A LOCALLY RAKED CEILING IN LIVING AREA (THIS COULD BE A BUYER VARIATION)



PULLEY SYSTEM BUILT INTO A HARDWOOD BED WITH SUPPORTED CEILING HOOKS, USED AS A PLATFORM LIFT TO PROTECT BELONGINGS

PULLEY WOULD BE TESTED AND SUBJECT TO ENGINEERING

PROVIDE HOOKS TO BE ABLE TO WRAP HANGING CLOTHES ABOVE FLOOD LINE

VISUAL FLOODLINE (+500mm) MAKES IT CLEAR WHAT NEEDS TO GO

PERMEABLE FENCES AND SWALES THROUGHOUT. GROUND SLOPES AWAY FROM HOUSE

DURING THE FLOOD
NTS

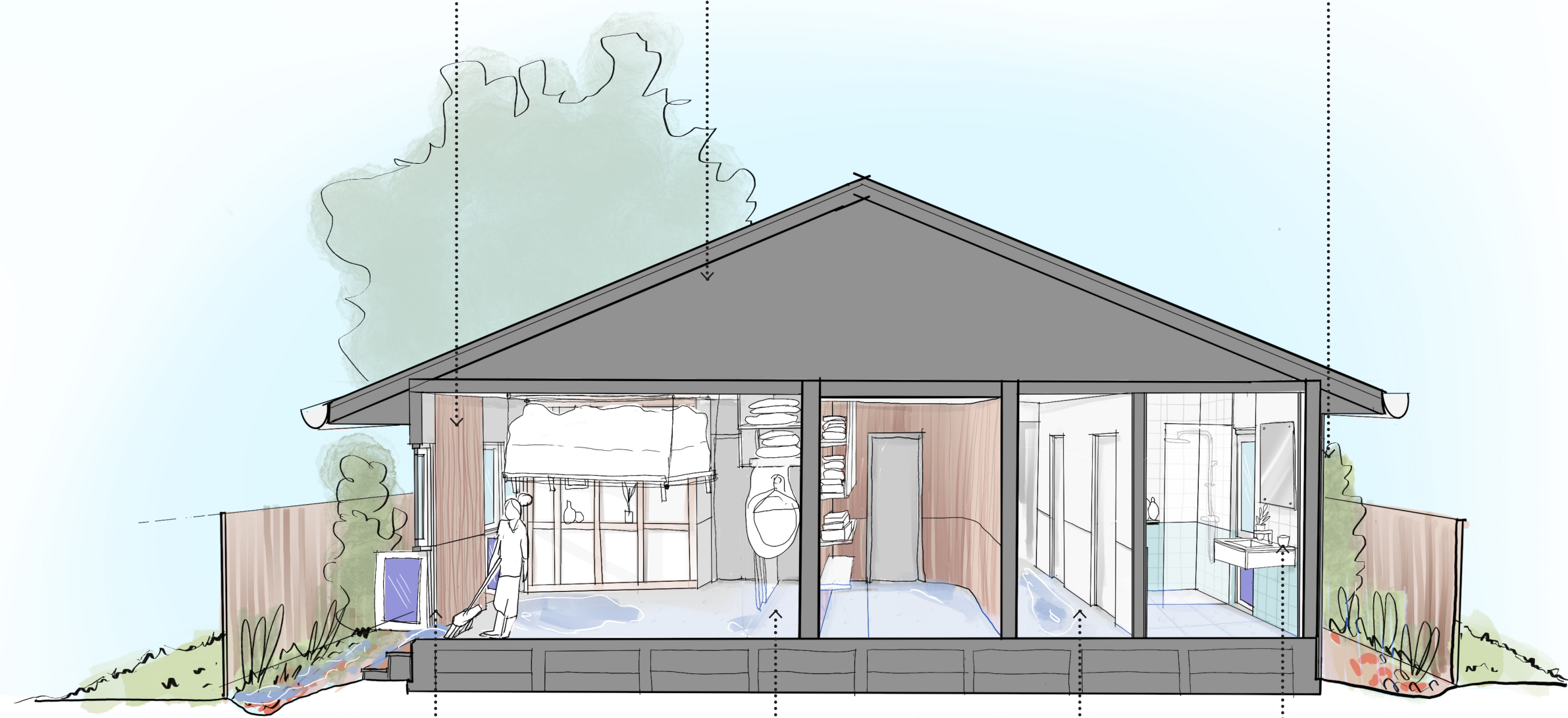
a house without corners
NEW PROJECT B: AVID's Detached Lowset in Hervey Bay (QLD)

Jane & Emily Arnold's Entry
PRELIMINARY CONCEPT ONLY

HARDWOOD STRUCTURE OPEN INTERNALLY TO DRAIN
(INTERNAL WALLS COULD POTENTIALLY ALSO BE LINED ONLY ON ONE SIDE SHOWN IN BEDROOM (DEPENDANT ON GOOD DETAILING))

SOLAR HOT WATER SYSTEM & OR SOLAR PANELS ON ROOF ENSURE RESIDENTS ARE BACK IN ACTION ASAP

SERVICES ON SIDE OF HOUSE ARE ALL INSTALLED ABOVE THE LINE TO GET BACK TO NORMAL FASTER



OPENABLE WINDOWS (& GLASS DOORS) FLUSH WITH THE FLOOR IN ROOM CORNERS ENABLE EASY SWEEPING

POLISHED CONCRETE FLOORS AND RESILIENT WALL FINISHES BELOW THE LINE

CORNERS MAKE IT EASIER TO SWEEP OUT WATER

BELONGINGS ABOVE THE LINE SHOULD BE SAFE (HAVE ASSUMED A +500mm TOLERANCE)

AFTER THE FLOOD
NTS

a house without corners
NEW PROJECT B: AVID's Detached Lowset in Hervey Bay (QLD)

Jane & Emily Arnold's Entry
PRELIMINARY CONCEPT ONLY