

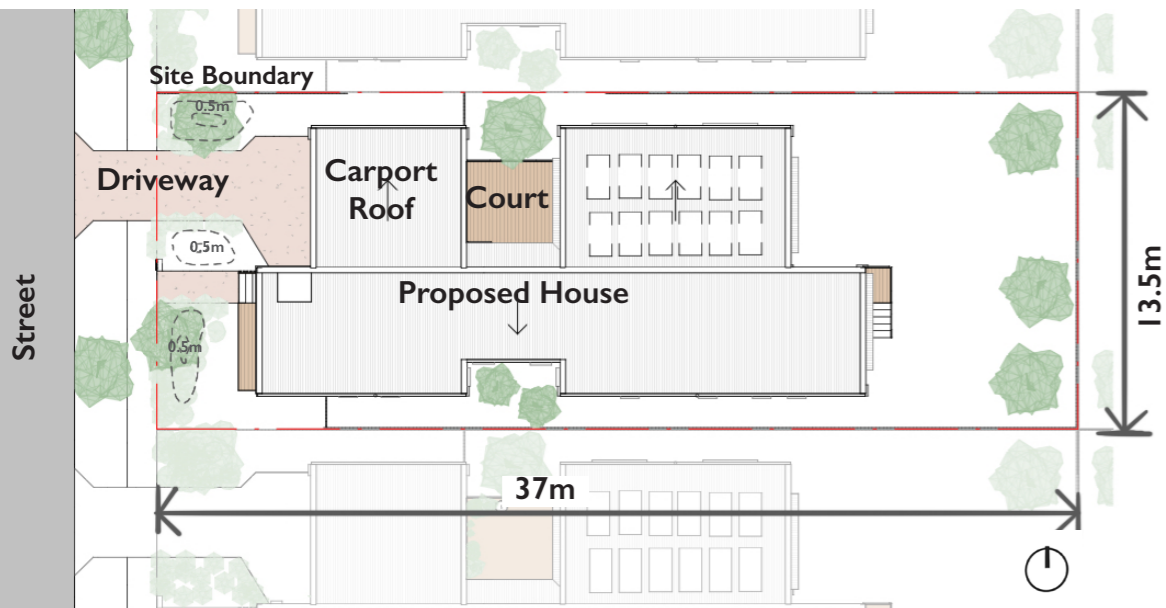
1 EFFICIENT SITE CONFIGURATION AND BUILT FORM CRAFTED BY PASSIVE DESIGN PRINCIPLES

2 A SOCIALLY AND ENVIRONMENTALLY ROOTED HOME IN IT'S LOCAL CONTEXT

3 A FLEXIBLE HOME WHICH PROVIDES A FRAMEWORK FOR OCCUPANTS TO ADAPT OVER TIME

4 AN INNOVATIVE ALL TIMBER STRUCTURE

5 A RESILIENT, ROBUST HOUSE WITH MOMENTS OF DELIGHT



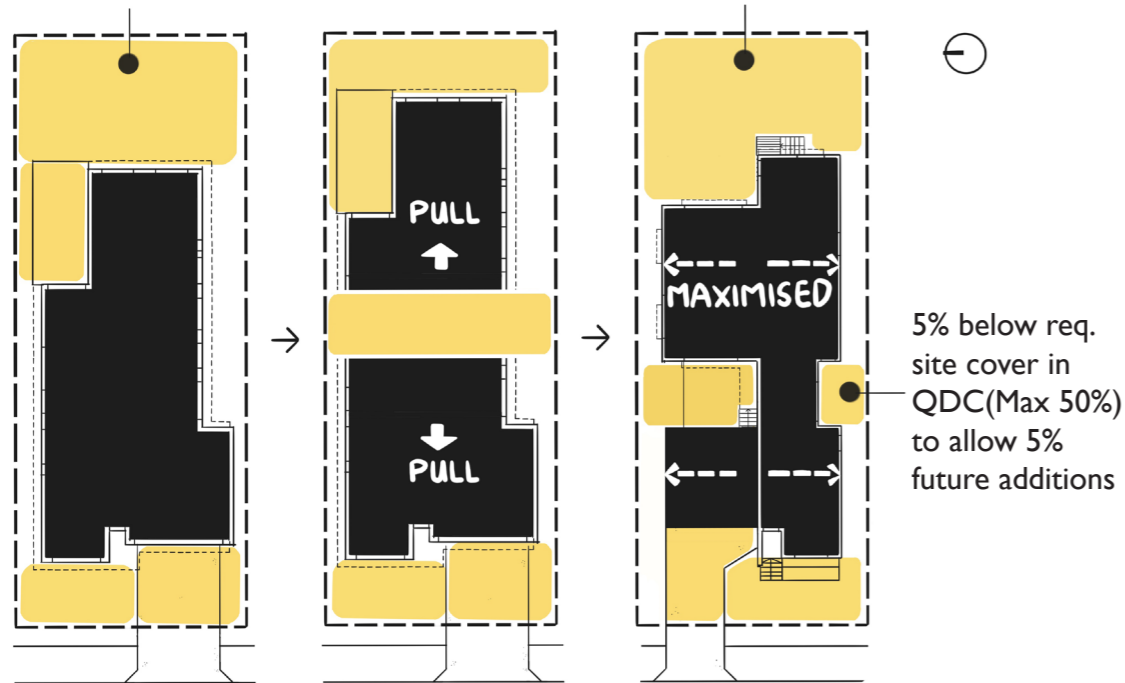
Site Plan



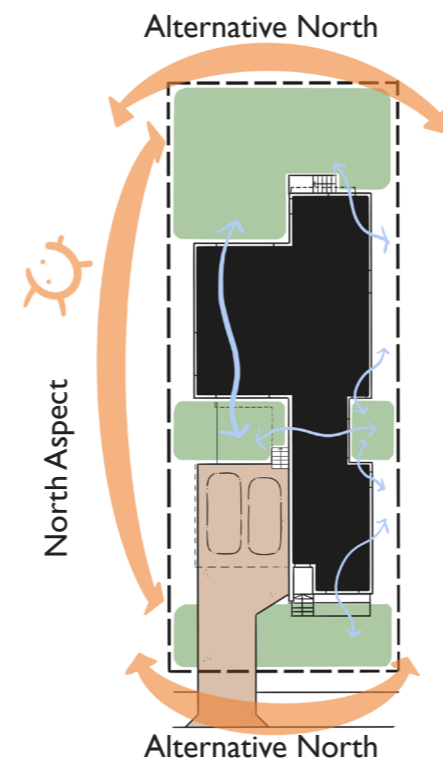
Street Frontage

210m² GFA
180m² INT + 30m² EXT

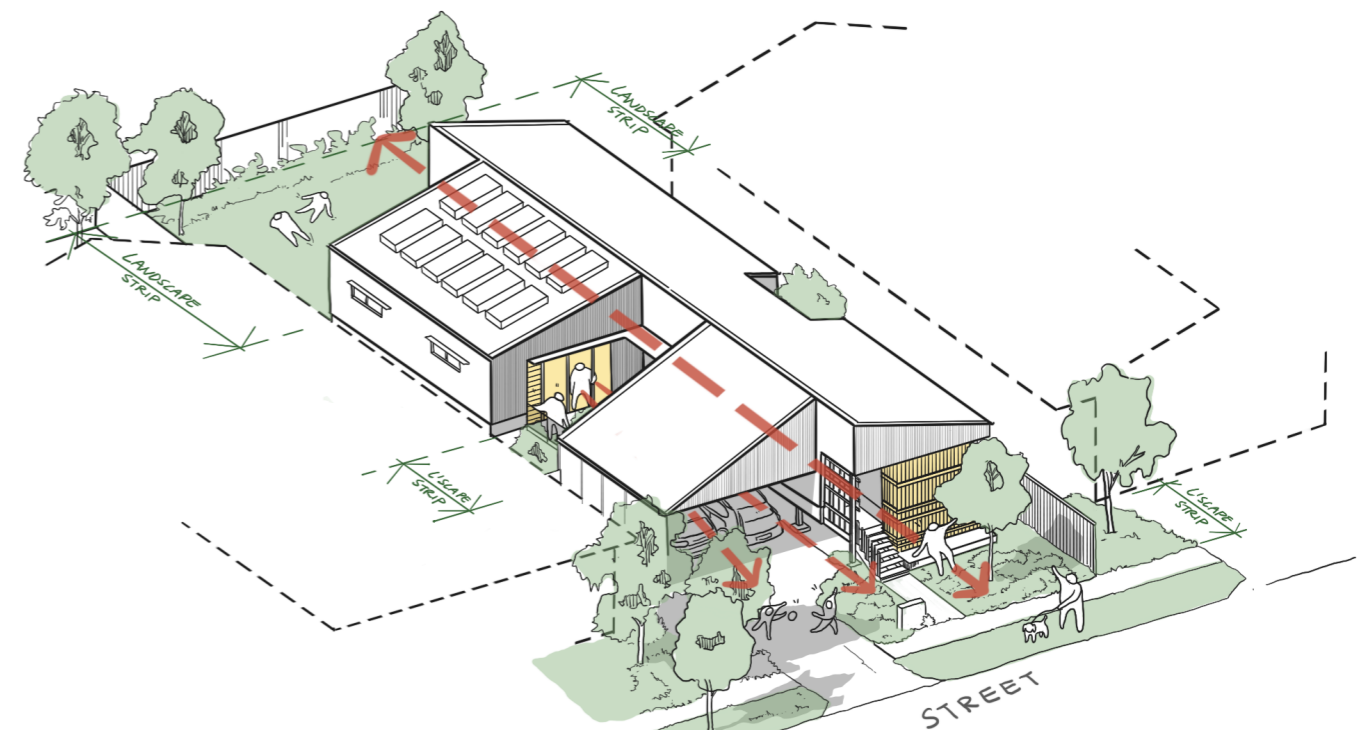
210m² GFA
160m² INT + 50m² EXT



Efficiency in Site Planning



Orientation and Passive Design



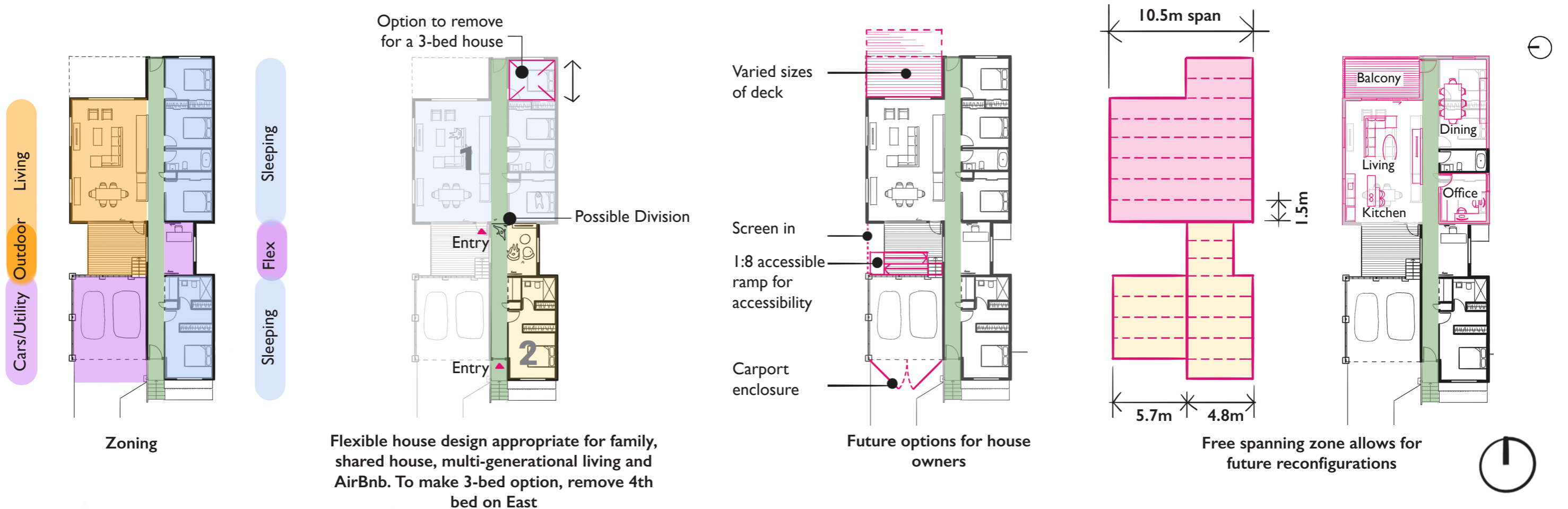
Social Engagement through street frontage activation and surveillance

The Floodable Queenslander

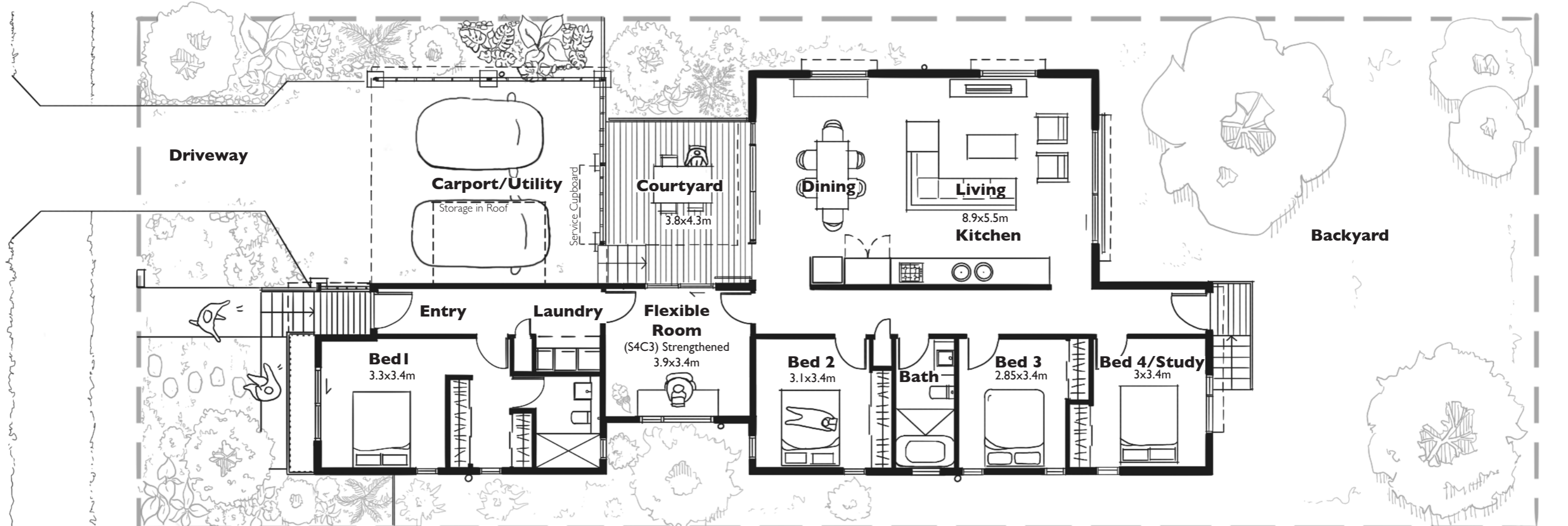
Wood Solutions Design Competition - Resilient Timber Homes in Hervey Bay(Brief B)

Michael Croft Architect

Copyright
All rights reserved. This work is copyright and cannot be used, sold, transferred, reproduced or copied in whole or in part in any manner or form (graphic, electronic or mechanical, including photography) without the agreement of Michael Croft.



Flexible house design appropriate for family, shared house, multi-generational living and AirBnb. To make 3-bed option, remove 4th bed on East



The Floodable Queenslander

Wood Solutions Design Competition - Resilient Timber Homes in Hervey Bay(Brief B)

Michael Croft Architect

Copyright
All rights reserved. This work is copyright and cannot be used, sold, transferred, reproduced or copied in whole or in part in any manner or form (graphic, electronic or mechanical, including photography) without the agreement of Michael Croft.



Polycarbonate Sheet for Transparency



Timber Screens and Deck Systems Using Reclaimed Timber



Timber Prefabricated Roof and Wall Trusses (Plywood Bracing)



Metal Mesh Balustrades

Proposed West Elevation



Proposed North Elevation



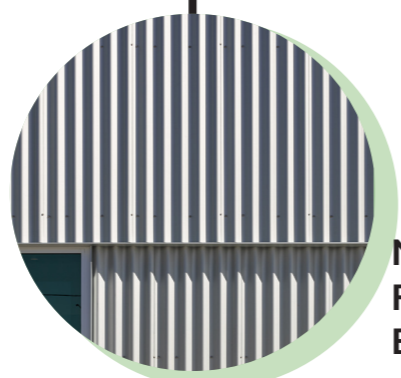
Proposed East Elevation



Proposed South Elevation



Window Awnings for Weather Protection



Metal Cladding as Robust & Durable Envelope



Glazed Louvres to Allow Ventilation & Light



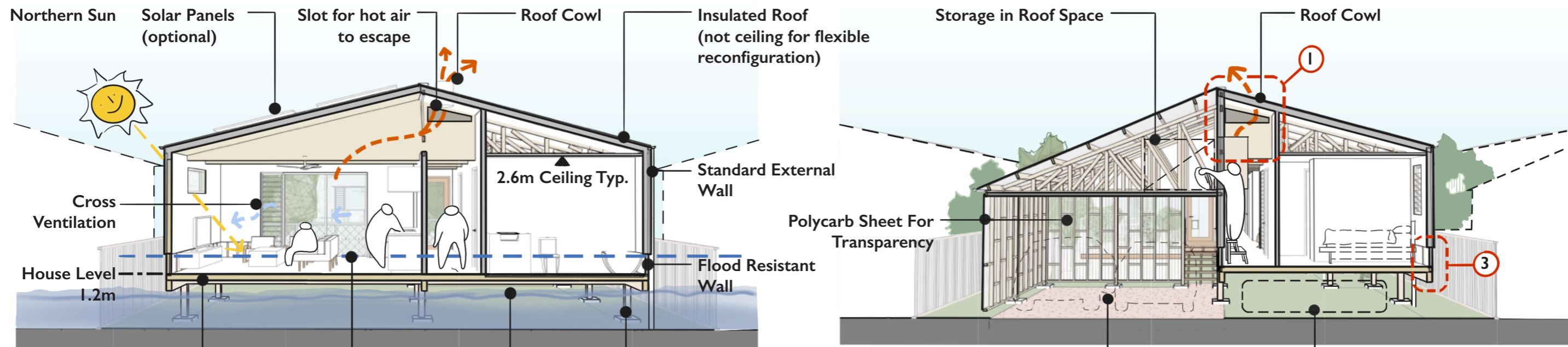
GLT and CLT Floor Deck

The Floodable Queenslander

Wood Solutions Design Competition - Resilient Timber Homes in Hervey Bay(Brief B)

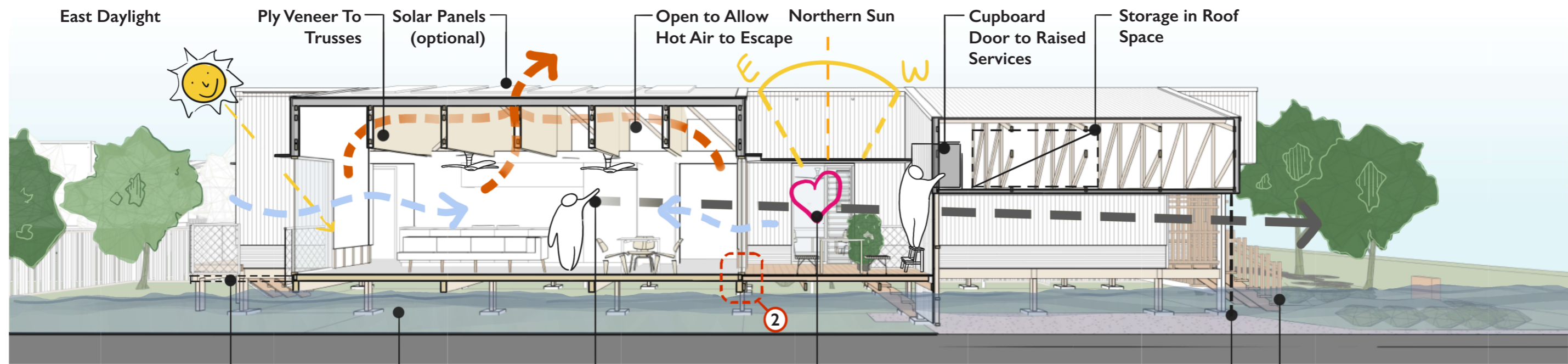
Michael Croft Architect

Copyright
All rights reserved. This work is copyright and cannot be used, sold, transferred, reproduced or copied in whole or in part in any manner or form (graphic, electronic or mechanical, including photography) without the agreement of Michael Croft.



CLT Slab Freeboard datum for future resilience of worsening climate change 1m Riverine Flood Level Glulam Stump on Concrete Footing

Storage in Roof Space Roof Cowl Future Enclosure to Garage Possible Possible Water Tank Location



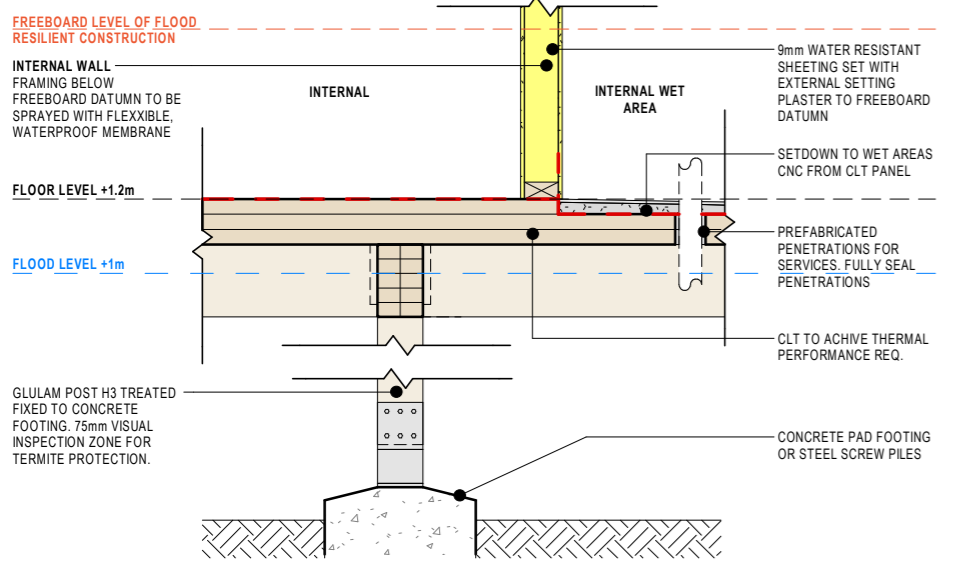
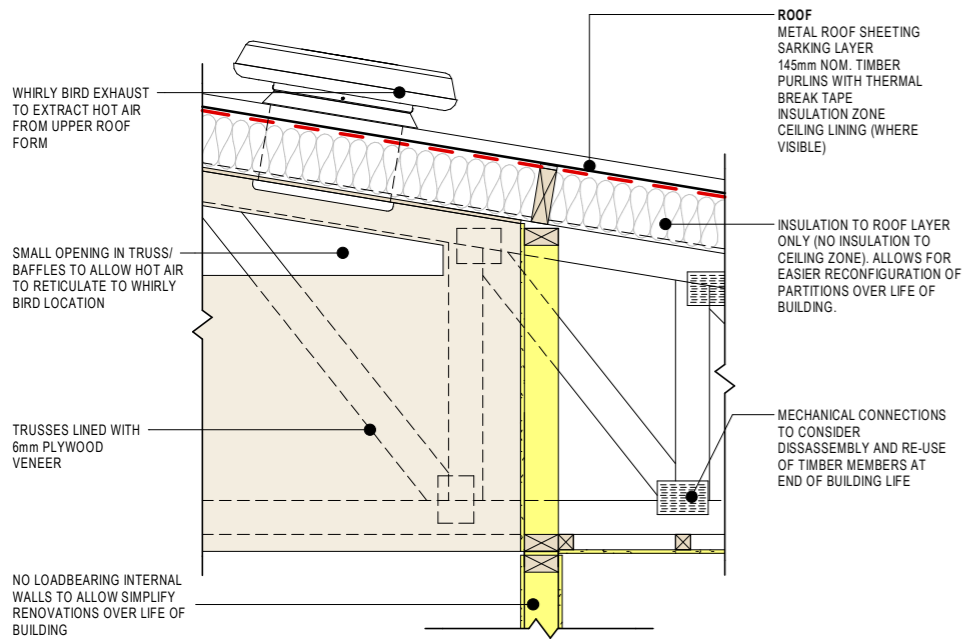
Future Possible Deck/Balcony 1m Riverine Flood Level Visual Connection to street The Heart of the House - The Courtyard Possible Future Enclosure to Garage Timber Entry to Articulate Street Front

The Floodable Queenslander

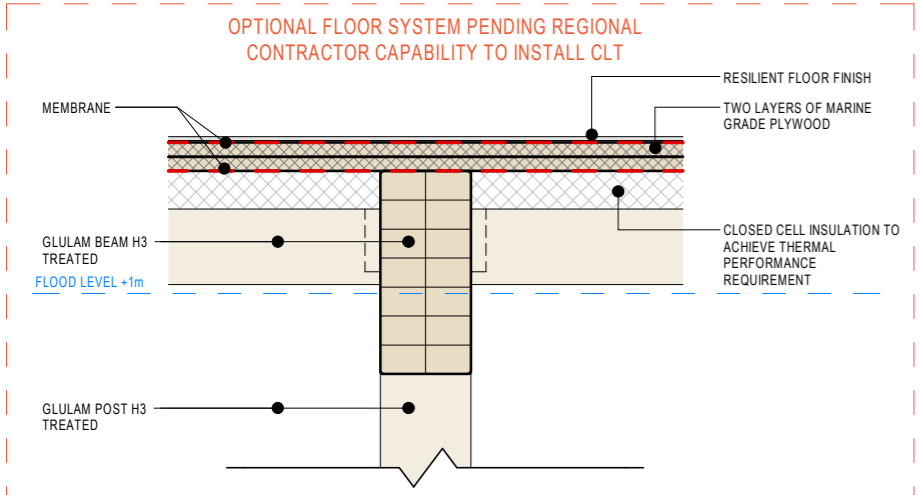
Wood Solutions Design Competition - Resilient Timber Homes in Hervey Bay(Brief B)

Michael Croft Architect

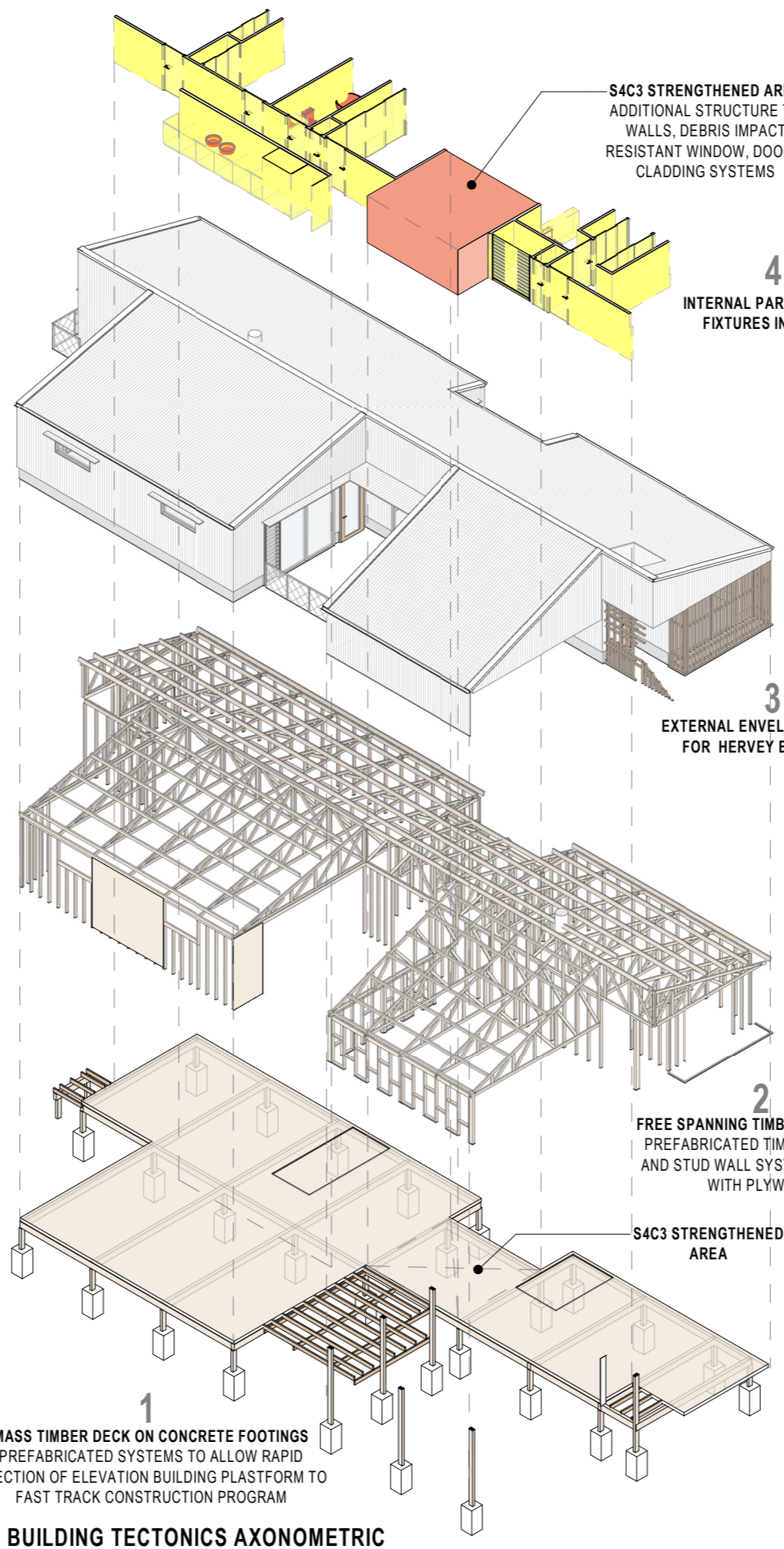
Copyright
All rights reserved. This work is copyright and cannot be used, sold, transferred, reproduced or copied in whole or in part in any manner or form (graphic, electronic or mechanical, including photography) without the agreement of Michael Croft.



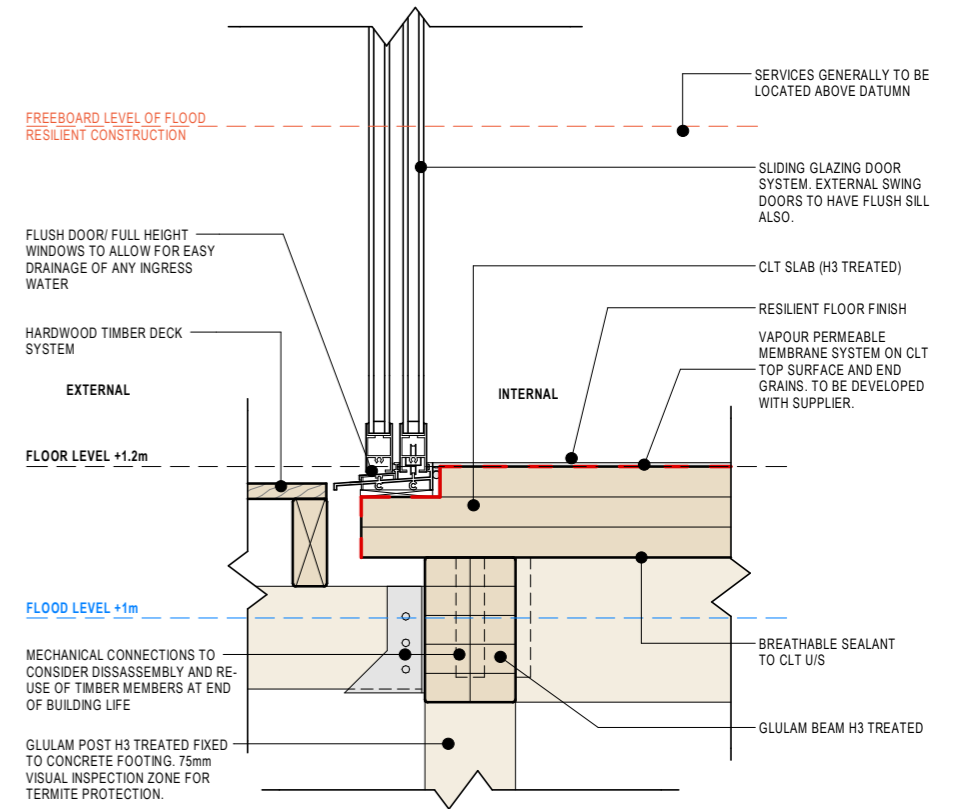
DETAIL 1 - ROOF AND TYPICAL INTERNAL PARTITION



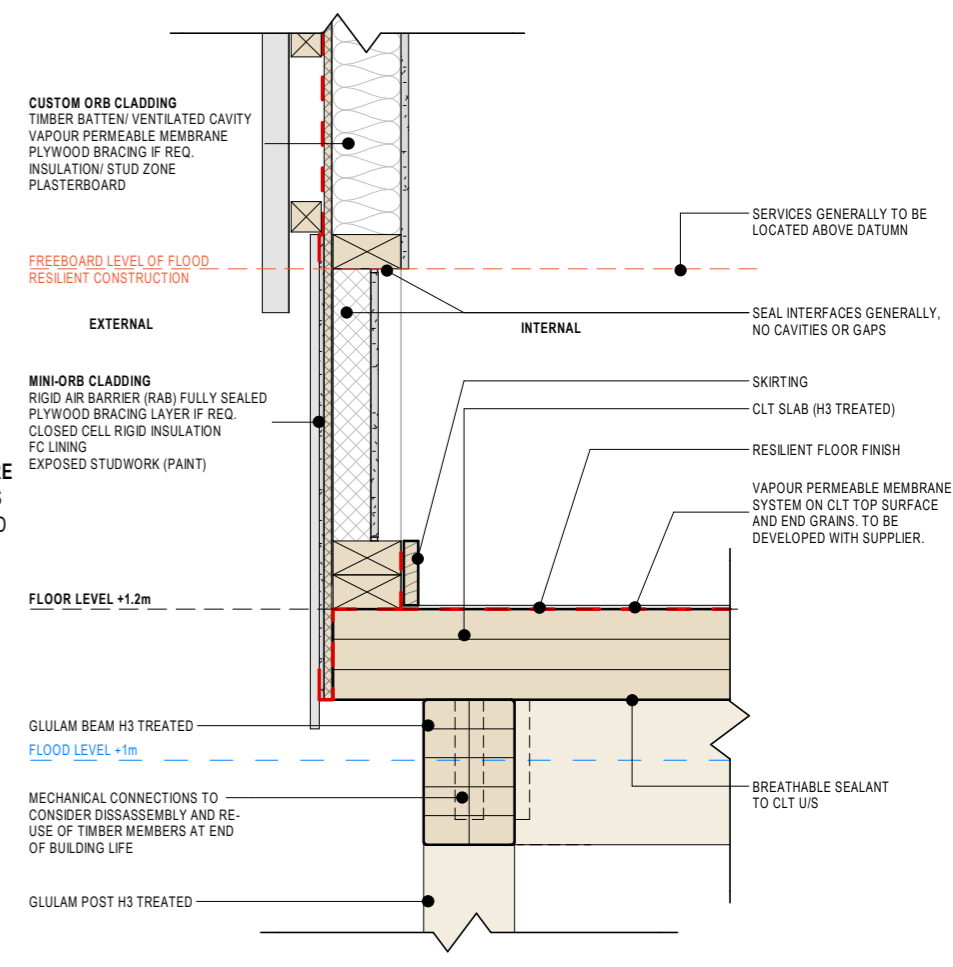
ALTERNATIVE FLOOR SYSTEM DETAIL



BUILDING TECTONICS AXONOMETRIC



DETAIL 2 - GLAZED SLIDING DOOR/ COURTYARD DECK



DETAIL 3 - TYPICAL EXTERNAL WALL DETAIL